

Preston

BUNGALOW | 1121 SQ.FT. | ELEVATION A & B



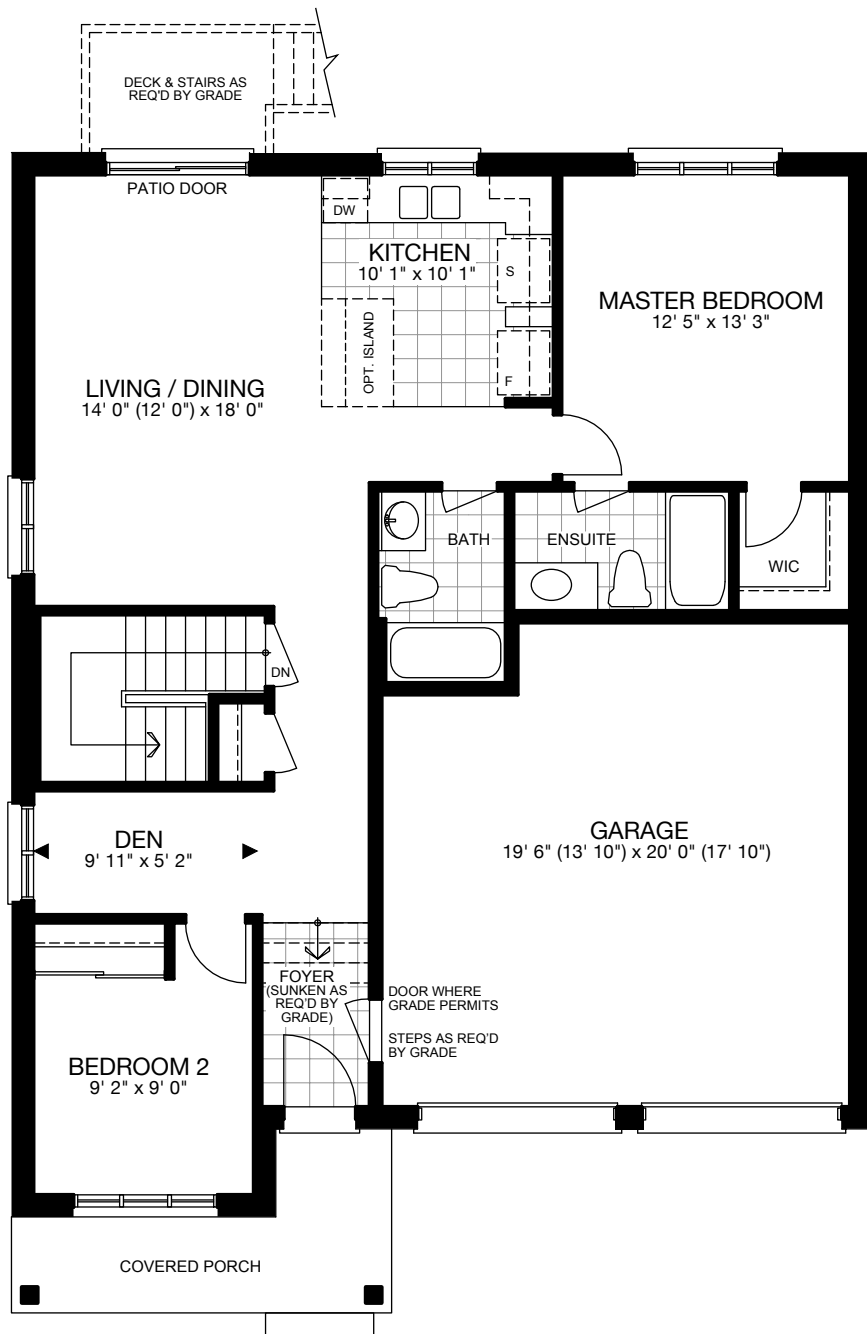
ELEVATION B



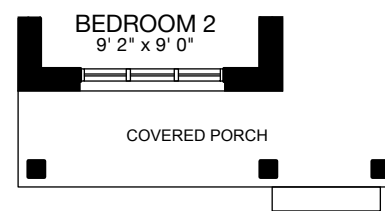
ELEVATION A

Preston

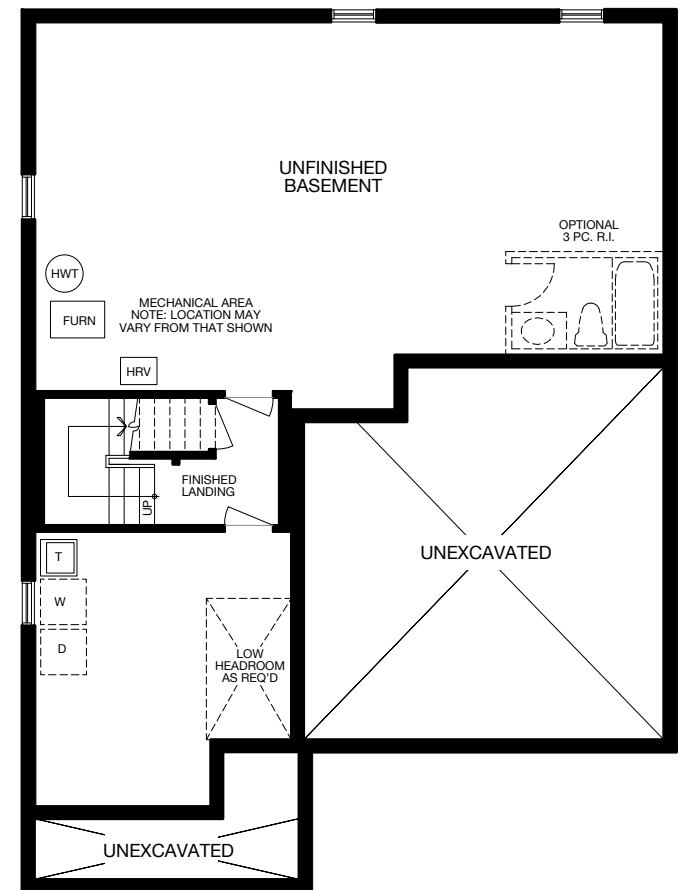
BUNGALOW | 1121 SQ.FT. | ELEVATION A & B



9' CEILING
GROUND FLOOR PLAN



PARTIAL
GROUND FLOOR PLAN
ELEVATION B



BASEMENT AREA 37 SQ.FT.

